

Faculty

- Andrew J Peacock
- Damien Bonnet
- Gerald Simonneau
- Issahar Ben Dov
- Jais Xavier
- Jean-Luc Vachiery
- Lewis Rubin
- Marc Humbert
- Marion Delcroix
- Mordechai Kramer
- Nazzareno Galie
- Neville Berkman
- Olivier Sitbon
- Robyn Barst

Conference Chairman: Yochai Adir

Official Conference Language: English

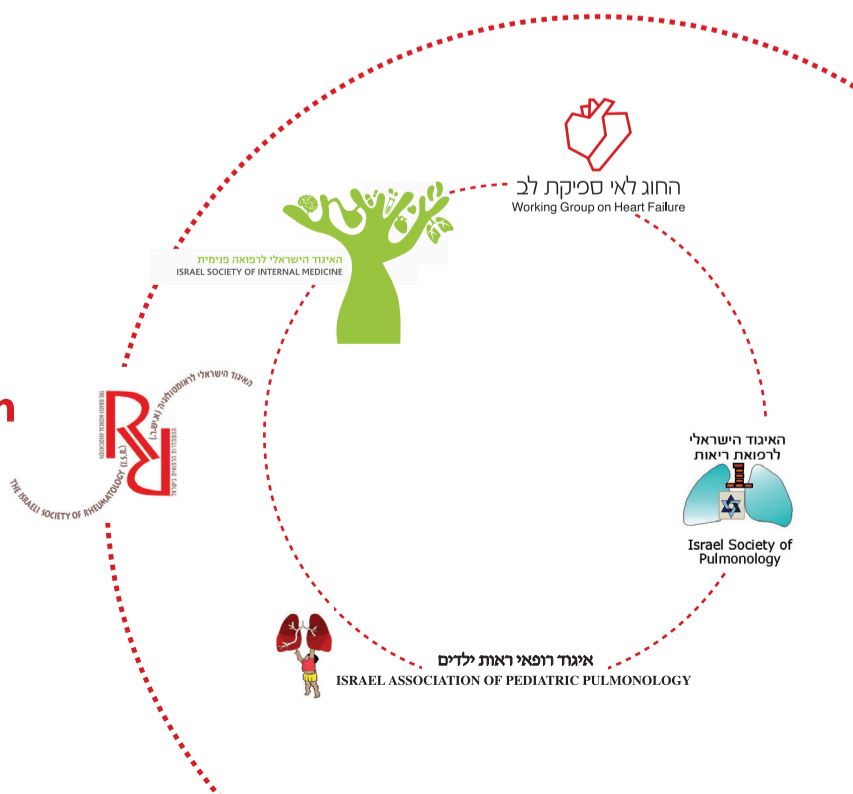
Registration, Conference Secretariat & Website:

INSTYLE EVENTS: Tel: +972-3-6426616 | Fax: +972-3-6431704 | Email: instyle1@netvision.net.il | Web: www.instyle-events.co.il



International Conference on Pulmonary Arterial Hypertension Israel 2011

**November 16-17, 2011
Daniel Hotel, Herzlia**



Scientific Program

Day 1: Wednesday, November 16, 2011

08:30-09:10 | Registration

09:10-09:20 | Welcome greeting | G. Fink, President of the Israeli society of Pulmonology
Y. Adir, Head, Organizing committee

Session 1: Pulmonary arterial hypertension: Challenges in diagnosis and evaluation

Chairs: G. Simonneau, L. Rubin

09:20-09:50 | PAH: A rare disease with multiple aetiologies | G. Simonneau

09:50-10:20 | Genetics of PAH: A clinical perspective | M. Humbert

10:20-10:50 | PAH: Evaluation of severity and prognosis | L. Rubin

10:50-11:20 | **Coffee break**

Session 2: Improving outcomes in PAH: Guidelines in clinical practice

Chairs: N. Galie, S. Varsano

11:20-11:50 | Current treatment guidelines for PAH | N. Galie

11:50-12:20 | Treat-to-target strategy and combination therapy for PAH | O. Sitbon

12:20-12:50 | Interactive patient cases: Treat-to-target approach in clinical practice / Severe PAH | M. Delcroix

12:50-13:45 | **Lunch**

Session 3: PAH associated with congenital heart diseases and connective tissue diseases

Chairs: R. Hirsch, L. Bliden

13:45-14:15 | From a systemic to pulmonary shunt to the Eisenmenger's physiology | R. Barst

14:15-14:45 | How to implant the guidelines in PAH associated with congenital heart diseases? | N. Galie

14:45-15:15 | Early detection and intervention in PAH associated with systemic sclerosis | M. Humbert

15:15-15:45 | Interactive patient cases in PAH-CTD: SSc / SLE | X. Jaïs

Day 2: Thursday, November 17, 2011

Session 4: Non PAH pulmonary hypertension

Chairs: JL Vachiery, A Man

09:10-09:35 | PH associated with lung diseases | I. Ben Dov

09:35-10:00 | PH associated with heart failure with preserved ejection fraction - A case for treatment? | JL Vachiery

10:00-10:25 | PH associated with sickle cell disease (SCD) | G. Simonneau

10:25-10:50 | PH associated with chronic non SCD haemolytic anemia | N. Berkman

10:50-11:10 | **Coffee Break**

Session 5: Exploring the role of the right ventricle (RV) in PAH

Chairs: M. Humbert, O. Amir

11:10-11:35 | The pivotal role of RV in PAH | JL Vachiery

11:35-12:00 | Cardiac MRI for the evaluation of RV function in PAH | A. Peacock

12:00-12:25 | Advanced treatment options for right heart failure in PAH | O. Sitbon

12:25-12:50 | PH in pregnancy and peri partum management | M. Kramer

12:50-13:50 | **Lunch**

Session 6: Surgical and new approaches for PH

Chairs: O. Sitbon, M. Kramer

13:50-14:15 | Appraise the complexity in diagnosing and assessing patients with CTEPH | X. Jaïs

14:15-14:40 | The role of lung transplantation and bridging to transplant in PAH | M. Delcroix

14:40-15:05 | New drugs for PAH: promises and failures | L. Rubin

15:05-15:20 | **Coffee break**

Session 7: PAH in the pediatric population

Chairs: T. Dagan, T. Schonfeld

15:20-15:45 | The natural history of pediatric PAH | D. Bonnet

15:45-16:10 | Treatment options in pediatric PAH patient | R. Barst

16:10-16:35 | Case studies in pediatric patients | D. Bonnet

16:35-16:45 | Closing remarks | Yochai Adir